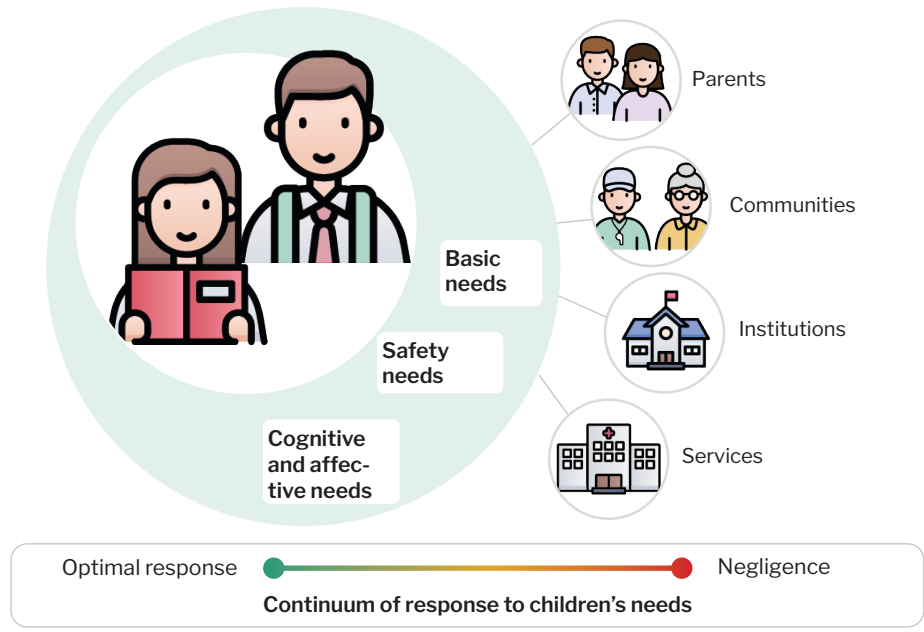


Societal response to COVID-19 and the needs of children

During lockdown, many of the **support systems** that normally contribute to meet children's needs were **unavailable for parents**.

Parents were left as the sole providers of all their children's needs.

RESEARCH QUESTION
According to parents, what was the response to their children's needs during lockdown?



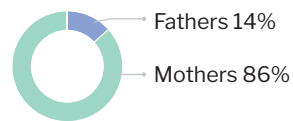
Ecosystemic and developmental model of children's needs

Results

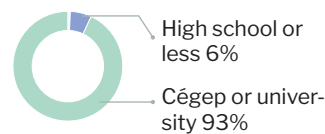
PARTICIPANTS

414 parents who completed the MAVIPAN questionnaire between April 29th and May 10th, 2020

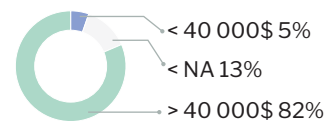
Participants



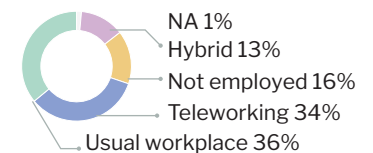
Education



Revenu

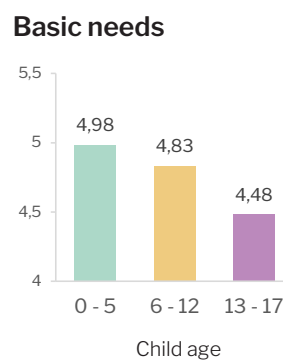
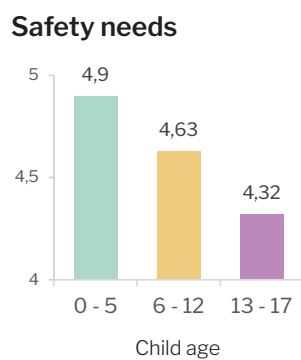
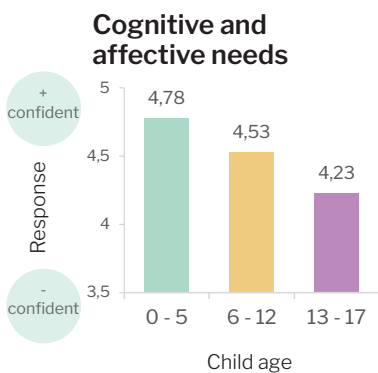


Employment



ABILITY TO MEET CHILDREN'S NEEDS

According to parents, confidence that their child got adequate response to their needs
Scores on three subscales of a questionnaire adapted from the MNBS and Place aux parents scales



Parents of **older children** were less confident that their child's needs were met.
This result seems **unique to the pandemic context**.



Issues

CONSIDERATIONS RELATED TO THE SOCIETAL RESPONSE TO THE PANDEMIC

Reducing access to schools contributes to increase **inequalities** between children. This could lead to **mental health** issues and an increase in the **dropout rate**.

By getting out of their homes, children access an important **surveillance and benevolence network**, from which they should not be separated.

Every day, many children benefit from **food support offered in schools**. For many, one less school day equals one more day of malnutrition.

According to our results, specific efforts are needed to ensure an adequate response to children's needs in the context of the pandemic.

Reference : Bérubé A, Clément ME, Lafantaisie V, LeBlanc A, Baron M, Picher G, et al. (2020). How Societal Responses to COVID-19 Could Contribute to Child Neglect. Child Abuse & Neglect. [in press]

Video presentation of the results : www.mavipan.ca